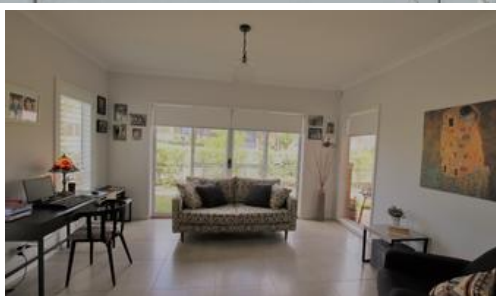
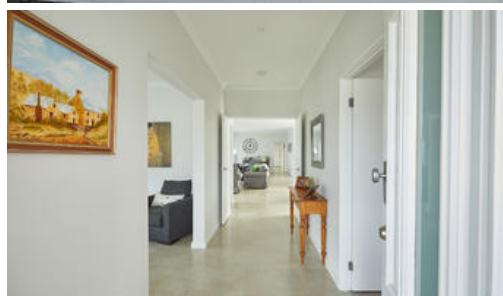


Sold

susie embleton  
property sales



6 Langley Ave, Renwick



## A DELIGHT TO INSPECT

INTRODUCING A CAPTIVATING SANCTUARY OF LIGHT AND SPACE

CHARMINGLY DECORATED AND IMMACULATELY PRESENTED

IT HAS IMMEDIATE STREET APPEAL AND OFFERS RELAXED, COMFORTABLE LIVING

- \* Wide, tiled entry from front verandah
- \* Open plan, tiled living and dining areas with French doors to outdoor entertaining area
- \* 3 double bedrooms - plantation shutters in bedroom 1
- \* Built-in robes (WIR in main)
- \* 2 bathrooms (ensuite to main)
- \* Formal lounge/study (off entry) with sliding doors to garden (could be 4th bedroom)
- \* Superb kitchen with Omega electric oven + 5 burner gas cooktop, stainless

3 2 2

**Price**

SOLD

**Property Type**

residential

**Property ID**

172

**Land Area**

499 m2

### Agent Details

Susie Embleton - 0488 568 688

### Office Details

Mittagong  
7 station street Mittagong NSW  
2575 Australia  
02 4872 1162



The above information provided has been furnished to us by the vendor/s. We have not verified whether or not that information is accurate and do not have any belief in one way or the other in its accuracy. We do not accept any responsibility to any person for its accuracy and do no more than pass it on. All interested parties should make and rely upon their own inquiries in order to determine whether or not this information is in fact accurate.