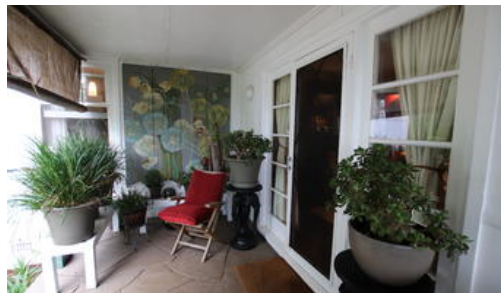




109 Oxley Dr, Mittagong



LINDEN LEA .

OFFERS BOUNDLESS POTENTIAL WITH LITTLE CHANCE OF OVER CAPITALISING - ANY RE-DESIGNING WILL ONLY FURTHER ENHANCE ITS VALUE AND AESTHETIC APPEAL

IT SITS HIGH AND PROUD ON AN HALF AN ACRE WITH A CIRCULAR DRIVEWAY AND PARK LIKE GROUNDS WITH RARE SPECIMAN TREES AND EXOTIC PLANTS

BRING THE 'OLD DAME' BACK TO LIFE - A REAL BEAUTY

- * Entrance from front verandah
- * Sitting room with open fire in stone surround
- * Large, sunny, eat-in kitchen with Euromaid oven (new) gas cooktop, rangehood, dishwasher and pantry
- * 9FT ceilings
- * Hardwood timber floors
- * 2 double bedrooms
- * Bathroom with bath, shower, vanity, heated towel rail, tasteful lights and

2 1 1

Price

Property Type

Property ID

Land Area

SOLD

residential

180

2,000 m2

Agent Details

Susie Embleton - 0488 568 688

Office Details

Mittagong

7 station street Mittagong NSW

2575 Australia

02 4872 1162



The above information provided has been furnished to us by the vendor/s. We have not verified whether or not that information is accurate and do not have any belief in one way or the other in its accuracy. We do not accept any responsibility to any person for its accuracy and do no more than pass it on. All interested parties should make and rely upon their own inquiries in order to determine whether or not this information is in fact accurate.