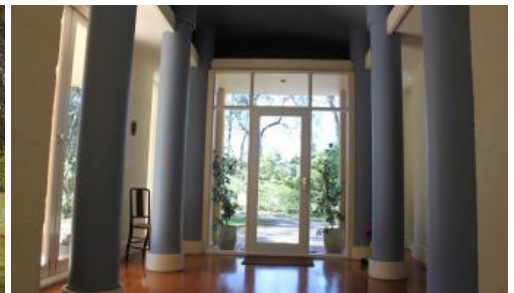




Colo Vale



## 'HARLOW PARK'

HOUSE AND STUDIO ON 6.3 ACRES

FULL BRICK, TRI-LEVEL, ARCHITECT DESIGNED HOME SURROUNDED BY BEAUTIFULLY LANDSCAPED GROUNDS

THIS MODERN HOME OFFERS PRIVACY AND PLENTY OF ROOM TO RELAX AND ENTERTAIN

- \* 5 bedrooms - 4 with access to deck
- \* Built-in robes (fitted-out)
- \* 3 bathrooms (2 ensuites)
- \* powder room
- \* Generous entrance foyer
- \* Large sitting room with vaulted ceilings, open fire & access outdoor entertaining areas
- \* Well appointed kitchen with Miele oven & steamer, dishwasher & breakfast bar
- \* Dining adjacent to kitchen with garden vistas
- \* Lounge/media room & family rooms
- \* Sewing/utility room with ironing station
- \* Polished timber floors in living areas
- \* Ducted heating & cooling

🛏 5 🚿 3 🚗 2

**Price**

**Property Type**

**Property ID**

SOLD

Residential

102

### Agent Details

Susie Embleton - 0488 568 688

### Office Details

Mittagong

7 station street Mittagong NSW

2575 Australia

02 4872 1162



- \* Detached double garage
- \* Secure, new fenced paddocks
- \* Water tank for garden
- \* Garden shed
- \* Fruit trees

SET BACK FROM THE ROAD AND ADJOINING OTHER PROPERTIES OF  
SIMILAR SIZE ACREAGE

LOCATED BETWEEN ALPINE AND COLO VALE WITH EASY ACCESS TO THE  
MOTORWAY & ONLY 5 KLMS TO MITTAGONG

The above information provided has been furnished to us by the vendor/s. We have not verified whether or not that information is accurate and do not have any belief in one way or the other in its accuracy. We do not accept any responsibility to any person for its accuracy and do no more than pass it on. All interested parties should make and rely upon their own inquiries in order to determine whether or not this information is in fact accurate.