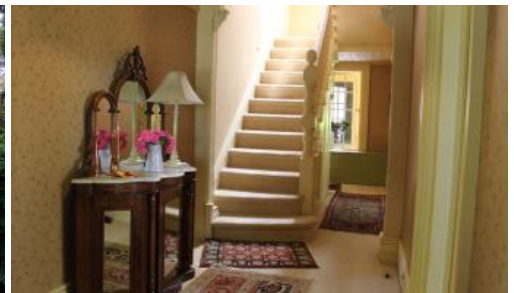




61-63 Berrima Street, Welby



'COLUMBINE COTTAGE' (circa 1888)...

IS STEEPED IN LOCAL HISTORY
A GENUINE LATE VICTORIAN DOUBLE BRICK COTTAGE WITH STUDIO

THIS IS A VERY SPECIAL HOME WITH ONE OF THE FINEST GARDENS IN THE
SOUTHERN HIGHLANDS

- * 3 - 4 bedrooms
- * 3 bathrooms (ensuite to main)
- * Main with dressing room & French doors to garden
- * Formal lounge with period fireplace & marble surround
- * Sunny, sitting room with garden vista
- * Formal dining with period fireplace
- * Country style eat-in kitchen with fuel stove, Bosch appliances & Butler's pantry
- * Sunroom with door to private courtyard & studio
- * Ducted gas central heating & 2 split-system a/c
- * Laundry with w.c, vanity & shower
- * Single garage & workshop
- * Detached studio/guest accommodation (original kitchen) with brick fireplace & garden views

THE MAGNIFICENT GARDENS HAVE BEEN NURTURED AND LOVED FOR OVER
FORTY YEARS

3 3 1 999 m2

Price	SOLD
Property Type	Residential
Property ID	133
Land Area	999 m2

Agent Details

Susie Embleton - 0488 568 688

Office Details

Mittagong
7 station street Mittagong NSW
2575 Australia
02 4872 1162



WALKING THROUGH THIS HOME AND GARDEN THE ROMANCE OF THE PERIOD IS IMMEDIATELY FELT

The above information provided has been furnished to us by the vendor/s. We have not verified whether or not that information is accurate and do not have any belief in one way or the other in its accuracy. We do not accept any responsibility to any person for its accuracy and do no more than pass it on. All interested parties should make and rely upon their own inquiries in order to determine whether or not this information is in fact accurate.