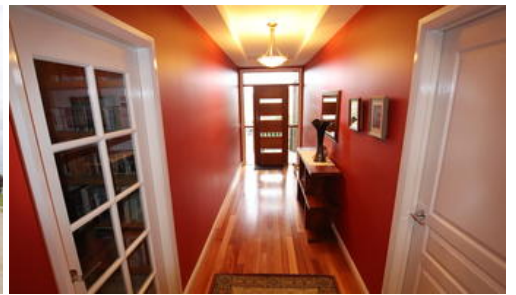




77 Renwick Dr, Renwick



### 'GREENLEA'

THIS APPEALING, SPLIT-LEVEL FAMILY HOME IS DESIGNED FOR COMFORTABLE, RELAXED LIVING WITH EXCELLENT PRESENTATION, SUPERIOR INCLUSIONS AND A FUNCTIONAL FLOOR PLAN

- \* 4 double bedrooms
- \* Built-in robes (fitted-out)
- \* WIR in main (fitted-out)
- \* 2 bathrooms (ensuite to main) both with electric wall heaters
- \* Chef's kitchen with Miele electric oven & steamer, 5 burner gas cooktop, stainless steel flue, Miele dishwasher, walk-in pantry and island workbench
- \* Open plan casual meals area and family room with built-in wall unit and sliding doors to rear deck and garden
- \* Formal lounge/dining with French doors and slow combustion fire
- \* TV room/study
- \* Powder room with vanity (off laundry)

4 2 2

<b>Price</b>	\$895,000
<b>Property Type</b>	residential
<b>Property ID</b>	174
<b>Land Area</b>	800 m2

#### Agent Details

Susie Embleton - 0488 568 688

#### Office Details

Mittagong  
 7 station street Mittagong NSW  
 2575 Australia  
 02 4872 1162



The above information provided has been furnished to us by the vendor/s. We have not verified whether or not that information is accurate and do not have any belief in one way or the other in its accuracy. We do not accept any responsibility to any person for its accuracy and do no more than pass it on. All interested parties should make and rely upon their own inquiries in order to determine whether or not this information is in fact accurate.