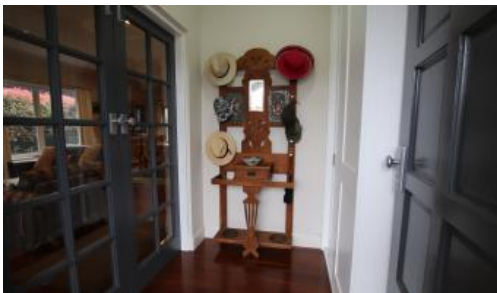


Sold

susie embleton
property sales



Mittagong



A STYLISH HOME IN AN APPEALING LOCATION

A STYLISH HOME IN AN APPEALING LOCATION

ONE BLOCK FROM LAKE ALEXANDRA AND TWO BLOCKS TO TOWNS CENTRE
- WALK EVERYWHERE

THIS WELL PRESENTED, OPEN PLAN HOME HAS MANY APPEALING FEATURES
- HIGH CEILINGS, TIMBER FLOORS AND NATURAL LIGHT ALL MAKE FOR COMFORTABLE LIVING

- * Entrance from front verandah
- * Foyer with cloak cupboard and French doors to living areas
- * Open plan lounge, dining and family areas
- * French screened doors from dining to outside deck
- * Kitchen with Kleenmaid cooker, 6 burner gas cooktop, stainless steel flue, dishwasher, pantry, plenty of storage, stone benchtops and breakfast bar
- * 3 bedrooms
- * Built-in robes
- * 2 full bathrooms
- * Ducted reverse-cycle air conditioning & ducted gas central heating
- * Wide skirting boards
- * Laundry with door to outside
- * 9ft ceilings

🛏️ 3 🌳 2 🚗 2 📏 505m2

Price	SOLD
Property Type	Residential
Property ID	179
Land Area	505 m2

Agent Details

Susie Embleton - 0488 568 688

Office Details

Mittagong
7 station street Mittagong NSW
2575 Australia
02 4872 1162

susie embleton
property sales

- * Walk-in linen cupboard
- * LED lighting throughout (new)
- * Water tanks for garden (electric pump)
- * Double garage with auto door
- * Landsize: 505m2

BEHIND THE HIGH FENCE IS RELAXED LIVING ON A LEVEL, ESTABLISHED, MANAGEABLE BLOCK WITH FENCED GARDEN ROOMS AMONGST CAMELLIAS, ROSES, MAGNOLIAS, BUXUS AND PHOTINIAS

agent interest

We accept no responsibility for misstatement, omission or error contained in this document. Interested parties should rely on their own enquiries

The above information provided has been furnished to us by the vendor/s. We have not verified whether or not that information is accurate and do not have any belief in one way or the other in its accuracy. We do not accept any responsibility to any person for its accuracy and do no more than pass it on. All interested parties should make and rely upon their own inquiries in order to determine whether or not this information is in fact accurate.