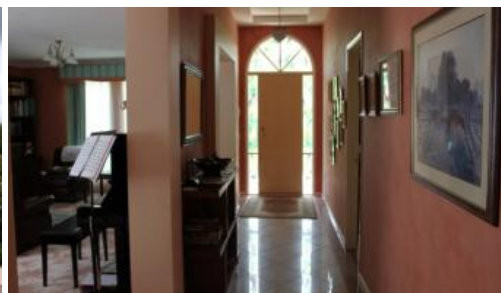


Sold



Bowral



**SOLD**

A GREAT SETTING AND LOTS OF SPACE

THIS SUBSTANTIAL, 33 SQUARE FAMILY HOME FEATURES FORMAL AND INFORMAL LIVING AREAS, A SUNNY ASPECT AND SET ON AN ESTABLISHED HALF ACRE

- \* 4 bedrooms with built-in robes
- \* large master bedroom with full bathroom and WIR's x 2
- \* main bathroom with shower, vanity, bath & w.c.
- \* entrance with portico & tiled hallway with 10 ft ceiling
- \* formal lounge & dining with Jetmaster open fire with stone surround
- \* galley style kitchen with Miele electric oven, gas cooktop, rangehood, 2 drawer dishwasher, walk-in pantry & breakfast bar
- \* casual meals area (north facing) with garden vistas
- \* family room with gas log fire, built-in bookcases & sliding doors to north facing terrace
- \* media/games room with large built-in timber bookcase & entertainment unit
- \* large laundry with folding bench & storage
- \* double garage with auto door
- \* landsize: 2000m2 (1/2 acre)

THIS IS A GREAT HOME WITH LOTS OF APPEAL AND ROOM TO FURTHER CAPITALISE SHOULD YOU WISH TO ADD YOUR OWN PERSONAL

🛏 4 🌳 2 🚗 2 📏 2,000 m2

<b>Price</b>	SOLD
<b>Property Type</b>	Residential
<b>Property ID</b>	18
<b>Land Area</b>	2,000 m2

#### Agent Details

Susie Embleton - 0488 568 688

#### Office Details

Mittagong  
7 station street Mittagong NSW  
2575 Australia  
02 4872 1162



TOUCHES

The above information provided has been furnished to us by the vendor/s. We have not verified whether or not that information is accurate and do not have any belief in one way or the other in its accuracy. We do not accept any responsibility to any person for its accuracy and do no more than pass it on. All interested parties should make and rely upon their own inquiries in order to determine whether or not this information is in fact accurate.