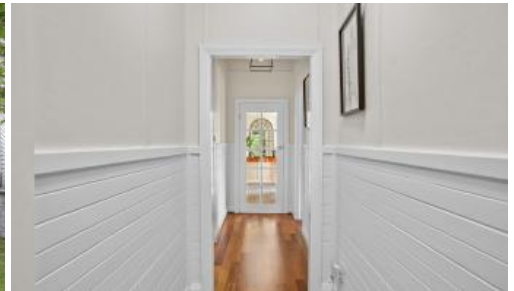




3 Evans St, Mittagong



'MERIVALE' (circa 1920)

A VERY APPEALING 1920'S COTTAGE WITH A FABULOUS, MODERN ADDITION

YOU WILL LOVE LIVING IN THIS LIGHT FILLED AND COMFORTABLE HOME WITH FRENCH DOORS FROM LIVING AREAS TO NORTH FACING OUTDOOR ENTERTAINING DECK

IMPRESSIVE IN BOTH ITS PROPORTIONS AND EXEMPLARY PRESENTATION

- * Entry from front verandah
- * 3 / 4 bedrooms – open fireplaces in 2
- * Built-in robes in bed 1 (fitted-out) & robes in bed 2
- * Bathroom with bath, shower, vanity, storage & w.c.
- * Family/sitting room with timber Dado rail
- * Plantation shutters & ceiling fans in the 2 front rooms
- * Gallery hallway with storage & garden vistas
- * Well appointed kitchen with electric stove, 5 burner gas cooktop, stainless steel flue, Bosh dishwasher, island bench/breakfast bar & pantry
- * Open plan lounge & dining with timber floors, split-system air conditioning & French doors to north facing outdoor entertaining area
- * High ceilings throughout

🛏 3 🚿 1 🚗 2 📏 933 m2

Price	SOLD
Property Type	Residential
Property ID	246
Land Area	933 m2

Agent Details

Susie Embleton - 0488 568 688

Office Details

Mittagong
7 station street Mittagong NSW
2575 Australia
02 4872 1162



- * Ceiling fans
- * Dado rails and timber paneling
- * Laundry with excellent storage & a w.c.
- * HRV roof ventilation system
- * Large garden shed with power
- * Landsize: 933m2

SET ON A LEVEL, SUNNY LANDSCAPED BLOCK WITH THE LIVING AREAS ENJOYING A PRIVATE NORTHLY ASPECT

ONLY A TEN-MINUTE WALK TO THE CENTRE OF TOWN

We accept no responsibility for misstatement, omission or error contained in this document. Interested parties should rely on their own enquiries

The above information provided has been furnished to us by the vendor/s. We have not verified whether or not that information is accurate and do not have any belief in one way or the other in its accuracy. We do not accept any responsibility to any person for its accuracy and do no more than pass it on. All interested parties should make and rely upon their own inquiries in order to determine whether or not this information is in fact accurate.